

The home of the turntable

THE VINYL ENGINE®

For more turntable manuals and setup information
please visit www.vinylengine.com

MC30 MC30 MC30 MC30
MC30 MC30 MC30 MC30
MC30 MC30 MC30 MC30
MC30 MC30 MC30 MC30
MC30 MC30 MC30 MC30
MC30 MC30 MC30 MC30
MC30 MC30 MC30 MC30
MC30 MC30 MC30 MC30
MC30 MC30 MC30 MC30
MC30 MC30 MC30 MC30
MC30 MC30 MC30 MC30
MC30 MC30 MC30 MC30

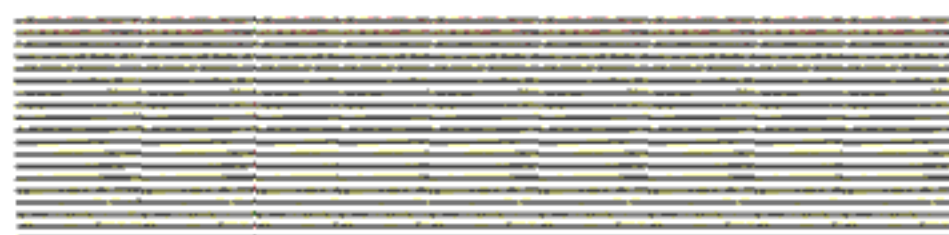
Congratulations! You are now the owner of the world's finest cartridge.

The MC 30 is Ortofon's newest moving coil design. It embodies 60 years of technical development - years distinguished by continuous research, remarkable innovation and significant contributions to the art of sound reproduction. Among these is the moving coil principle itself, first used and patented by Ortofon in 1948.

Today, we are the only company in the world that produces both the professional equipment for cutting master discs in the studio and the quality cartridges used for disc reproduction at home. This combined expertise has resulted in products of unchallenged superiority and has led directly to our proudest achievement: the MC 30.

resident's Certificate

With this Certificate, I testify that the attached specifications, photograph, and frequency response and channel separation curves were derived from your MC 30 cartridge, serial number:



Your MC 30 has been meticulously hand-made in the Ortofon laboratory by specially trained technicians. It was then subjected to stringent tests carried out by a separate group of quality control engineers before being approved for shipment.

Should any problem arise with your MC 30, please contact your authorized Ortofon dealer. He has been requested to give you immediate assistance.



Erik Rohmann, President

Technical data for MC30 with serial number:

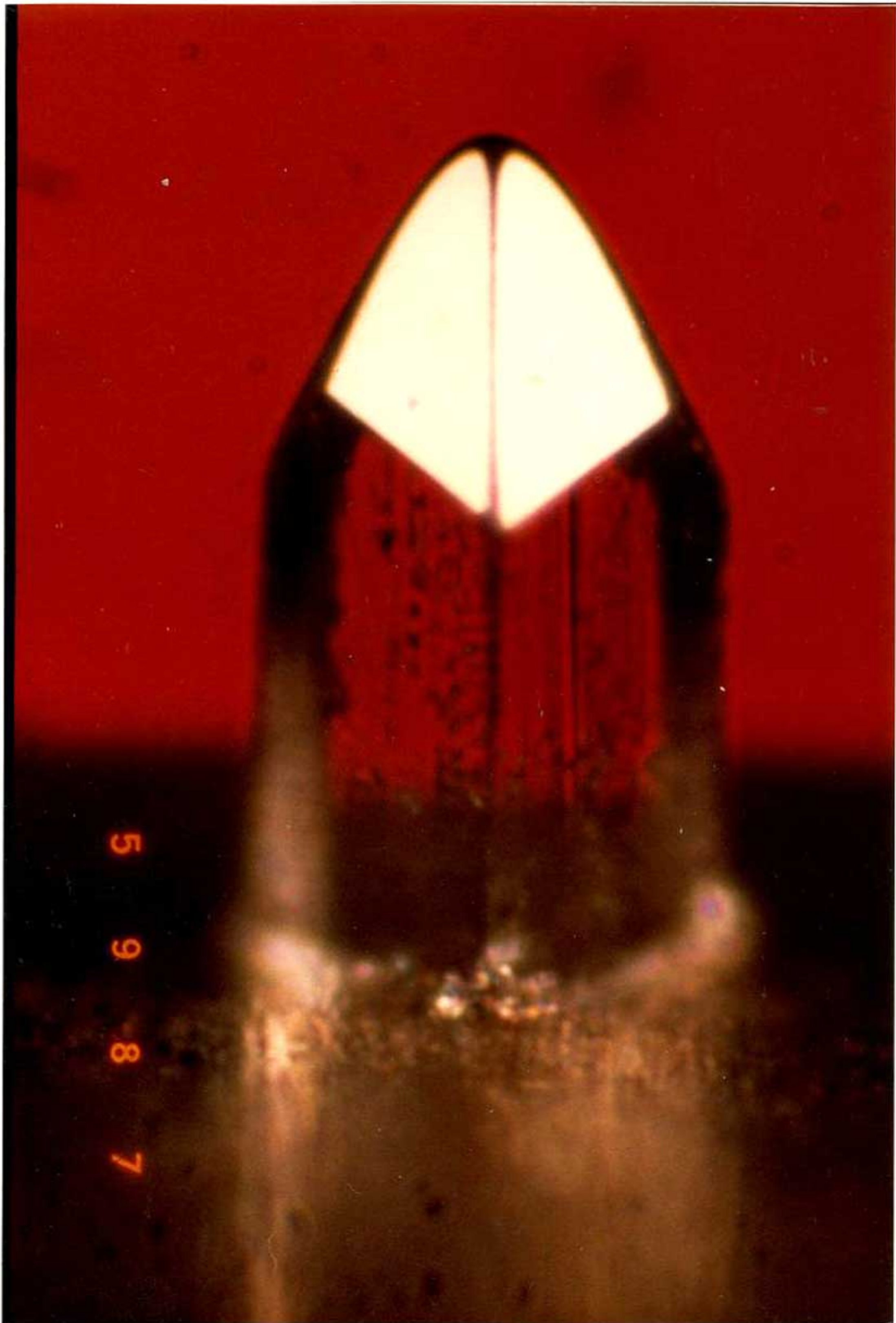
Output voltage, left channel at 1000 Hz, 5 cm/sec. Test record, Dual PVK 321	<u>0.094</u> mV
Output voltage, right channel at 1000 Hz, 5 cm/sec. Test record, Dual PVK 321	<u>0.092</u> mV
Tracking ability at 315 Hz at recommended tracking force. Test record, DIN 45549	<u>100</u> μ
FIM distortion at recommended tracking force, Test record, DIN 45542	<u>0.7</u> % (-6 dB)
Weight	7 gm.
Internal impedance DC resistance per channel	3.0 ohm
Recommended load impedance per channel for stereo	47,000 ohm
Vertical tracking angle	20°
Frequency range	5-60,000 Hz
Frequency response	20-20,000 Hz \pm 1 dB
Channel separation at 1000 Hz	min. 25 dB
Channel separation at 15,000 Hz	min. 20 dB
Channel balance	max. 1 dB
Dynamic compliance at 10 Hz: Horizontal: Vertical:	13 μ m/mN 13 μ m/mN
Type of stylus. Nude, 0.1 mm sq. orientated	Fine-line diamond
Stylus tip radius	6 μ m
Equivalent stylus tip mass	0,4 mg
Recommended tracking force	15 mN (1.5 gm)

See your specific frequency response and channel separation curves in the pocket at the back of the Manual.

All individual measurements have been made at a room temperature of 24°C (75°F) and humidity of 50-60% rel.

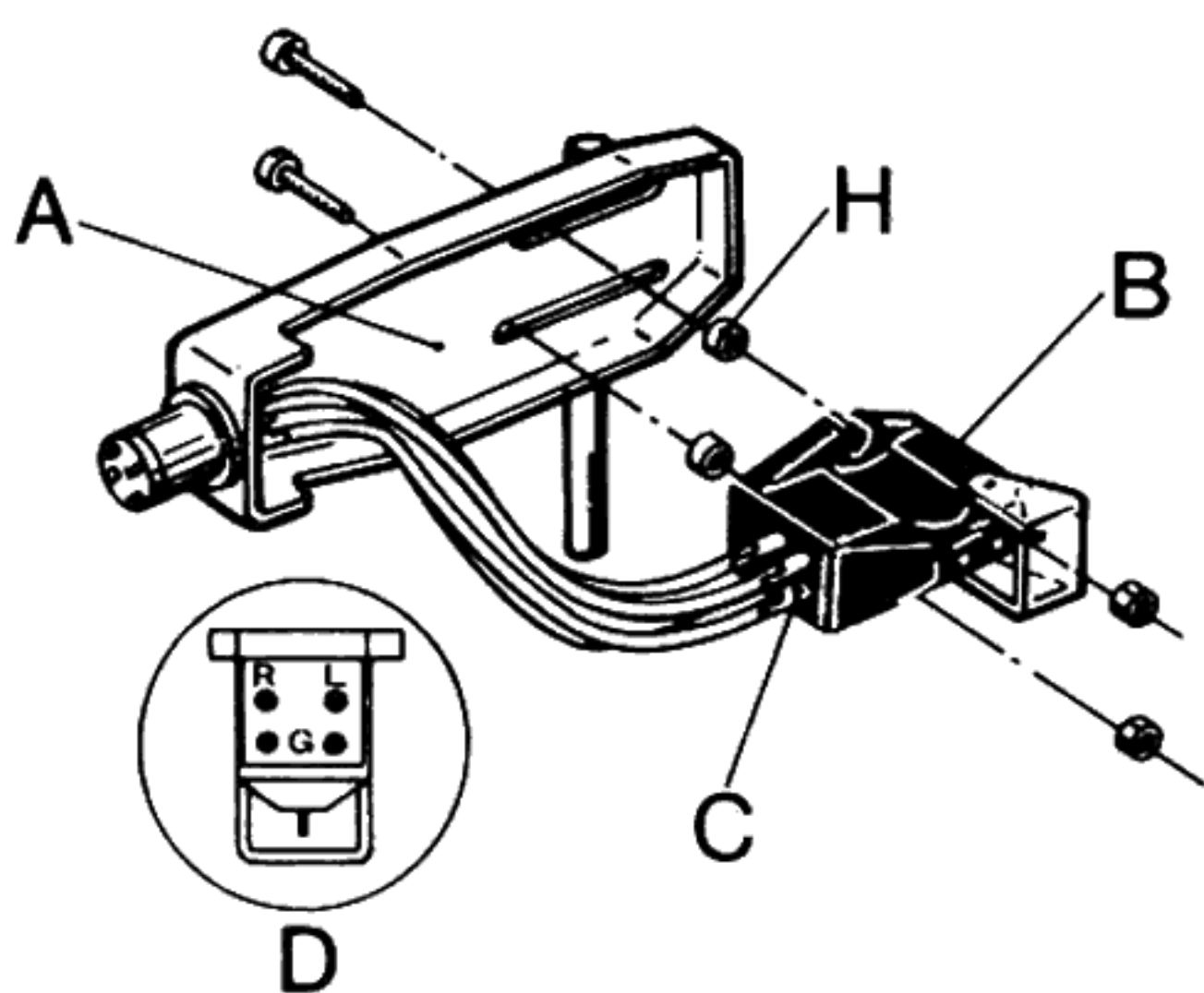
Micro-photograph of your own MC 30 Fine-line diamond stylus.

Before being shaped and polished, this nude diamond was orientated to obtain maximum strength from the diamond structure. The shape is Ortofon's own Fine-line, which gives wider groove contact and more even distribution of pressure. It is also the smallest diamond ever fitted to any of our moving coil pick-up cartridges.



Installation.

Before you start installing and using your Ortofon MC 30, please read the following instructions carefully.



1. The leads from the headshell (A) should be connected to the terminal pins (C) of the cartridge (B) by means of the clips attached to the leads. Please observe the colour code (D), otherwise the channel orientation and phasing of the cartridge will not be correct.

Note: Under no circumstances should the clips be soldered to the terminal pins.

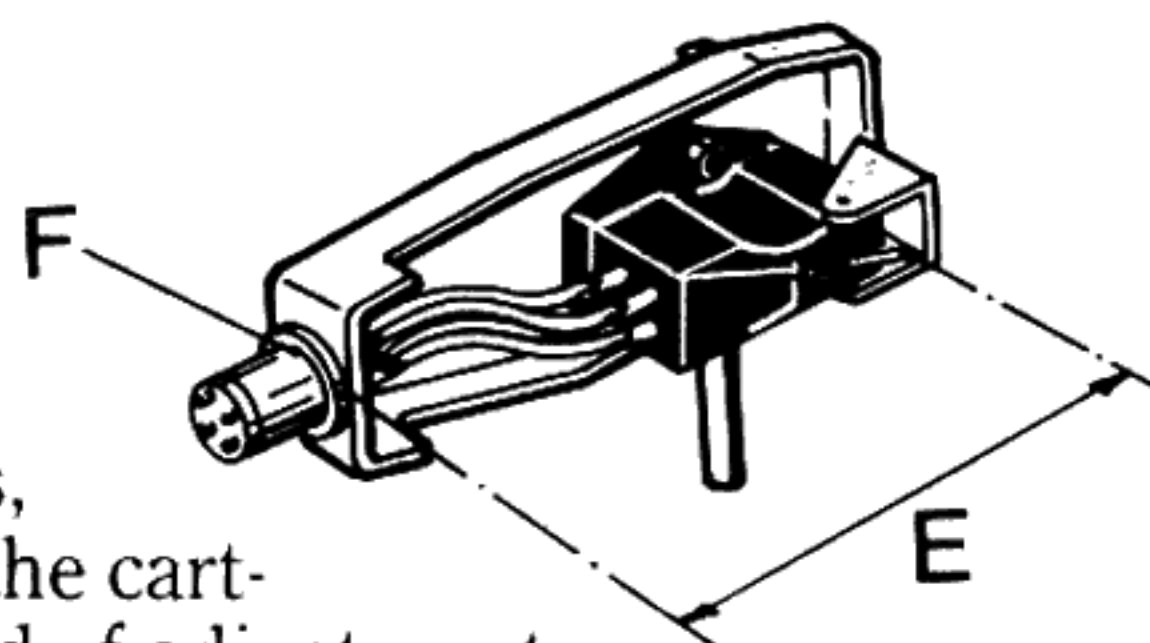
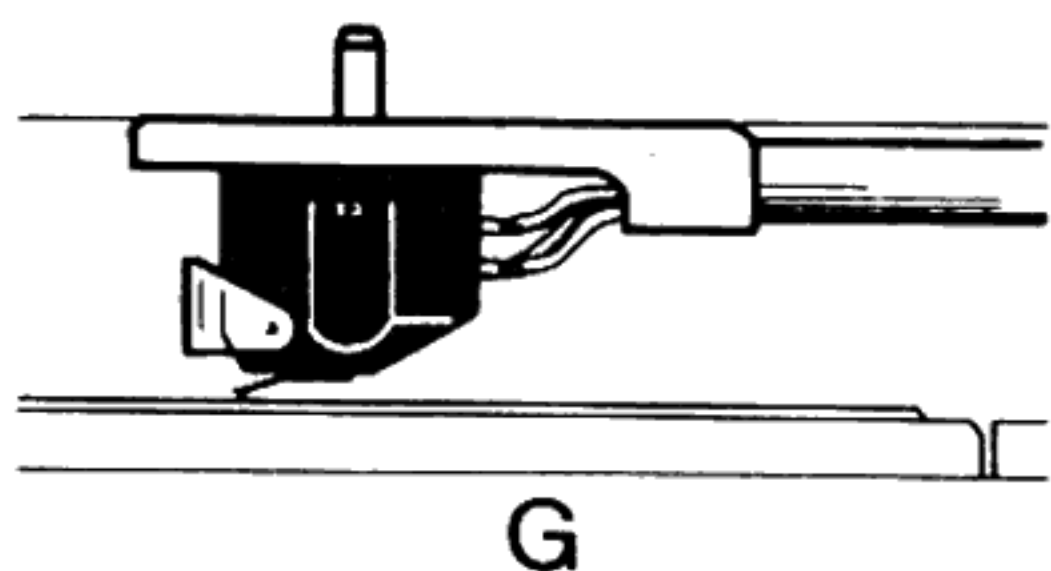
White: Left channel, signal (L)
Blue: Left channel, ground (LG)
Red: Right channel, signal (R)
Green: Right channel, ground (RG)

2. Then the cartridge should be fastened loosely in the headshell. If the headshell has provisions for overhead adjustment of the cartridge, the Owner's Manual for the turntable or tonearm should be consulted regarding the correct distance (E) from the stylus tip to the socket (F). When the cartridge has been correctly positioned in the headshell, the screws should be tightened in order to secure the cartridge.

3. The tonearm should be balanced. In the majority of cases, this should be done by means of the counterweight. Please refer to the Owner's Manual for the turntable or tonearm for detailed instructions. The recommended tracking force of the MC 30 should then be set.

4. In order to ensure optimum tracking ability and channel separation, it is important for the cartridge to be parallel to the record (G) during playback. This should be achieved by adjusting the height of the tonearm. In some cases, it may be necessary to place spacers (H) between the cartridge and the headshell but, in general, this method of adjustment is not recommended as it will increase the moving mass of the playback system.

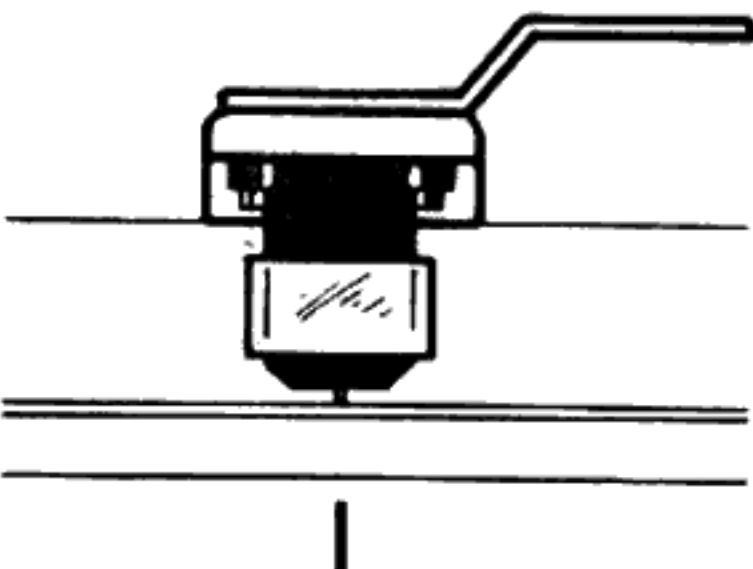
5. If the cartridge is not parallel with the record, when viewed from the front (I), its position should be adjusted by twisting the headshell carefully in the required direction. Please refer to the Owner's Manual for the turntable/tonearm.



The MC 30 has been designed for installation in Ortofon and other standard headshells. Some headshells and tonearms may make installation of the cartridge difficult. In such cases, instead of risking damage to this sensitive cartridge by doing it yourself, we recommend that you contact your Ortofon dealer, who will be pleased to advise you on such problems.

Amplifier connections

Owing to their low output voltage, Ortofon moving coil cartridges require a special step-up device, such as a moving coil transformer or a moving coil amplifier, to increase their output to the level of typical magnetic cartridges.



Some Hi-Fi amplifiers and receivers are equipped with inputs for moving coil cartridges. If the specifications of such inputs correspond to the output voltage and impedance of the MC 30, a separate step-up device may not be necessary. If you are in doubt, please consult your Ortofon dealer. He will also be happy to demonstrate the Ortofon range of moving coil transformers and amplifiers, among these the highly recommended T 30 transformer and MCA 76 pre-pre-amplifier, which will ensure a perfect match between your cartridge and main amplifier.

Maintenance

The diamond stylus of the cartridge should be cleaned with a suitable brush (accessory) before and after the playing of a record side. If a layer of dust has been collected on the stylus, the brush can be moistened with a special stylus cleaning agent.

When the cartridge is not in use, the stylus guard should always be snapped over the stylus in order to prevent damage to the delicate stylus and cantilever.

Ortofon's Exchange Service

Owing to the design of the Ortofon moving coil cartridges, the stylus is not part of a replaceable assembly. Ortofon offers, therefore, through its dealers, an exchange/repair service. If you need this service, please contact your Ortofon dealer.

The Ortofon Golden Ear Club.

We are proud that you have chosen the Ortofon MC 30 moving coil cartridge and herewith cordially invite you to become a member of the Ortofon Golden Ear Club. This Club has been specially established for Audiophiles who wish to keep abreast of technical developments, particularly in the field of pick-up cartridges.

All you have to do is complete the enclosed card and return it to us. You will then be registered as a member of the Club. As proof of membership, you will receive an Ortofon lapel badge and your name will be placed on our special mailing list. Twice a year we will forward you a copy of the Club's News Letter, which will keep you fully informed of what we are doing to further improve your listening enjoyment.

The undersigned wishes to become a member of the
Ortofon Golden Ear Club

(Please print)

Name _____

Address _____

Postal No. _____ Town _____

Country _____

My Ortofon MC 30, with serial number _____

was purchased at _____ (name of dealer)

in _____ (Town/Country)

The remainder of my Hi-Fi equipment consists of: -

	<u>Manufacturer</u>	<u>Model No.</u>
Pre-preamplifier	_____	_____
Transformer	_____	_____
Turntable	_____	_____
Tonearm	_____	_____
Tuner	_____	_____
Receiver	_____	_____
Amplifier	_____	_____
Loudspeakers	_____	_____
Other cartridges	_____	_____

Additional information: _____

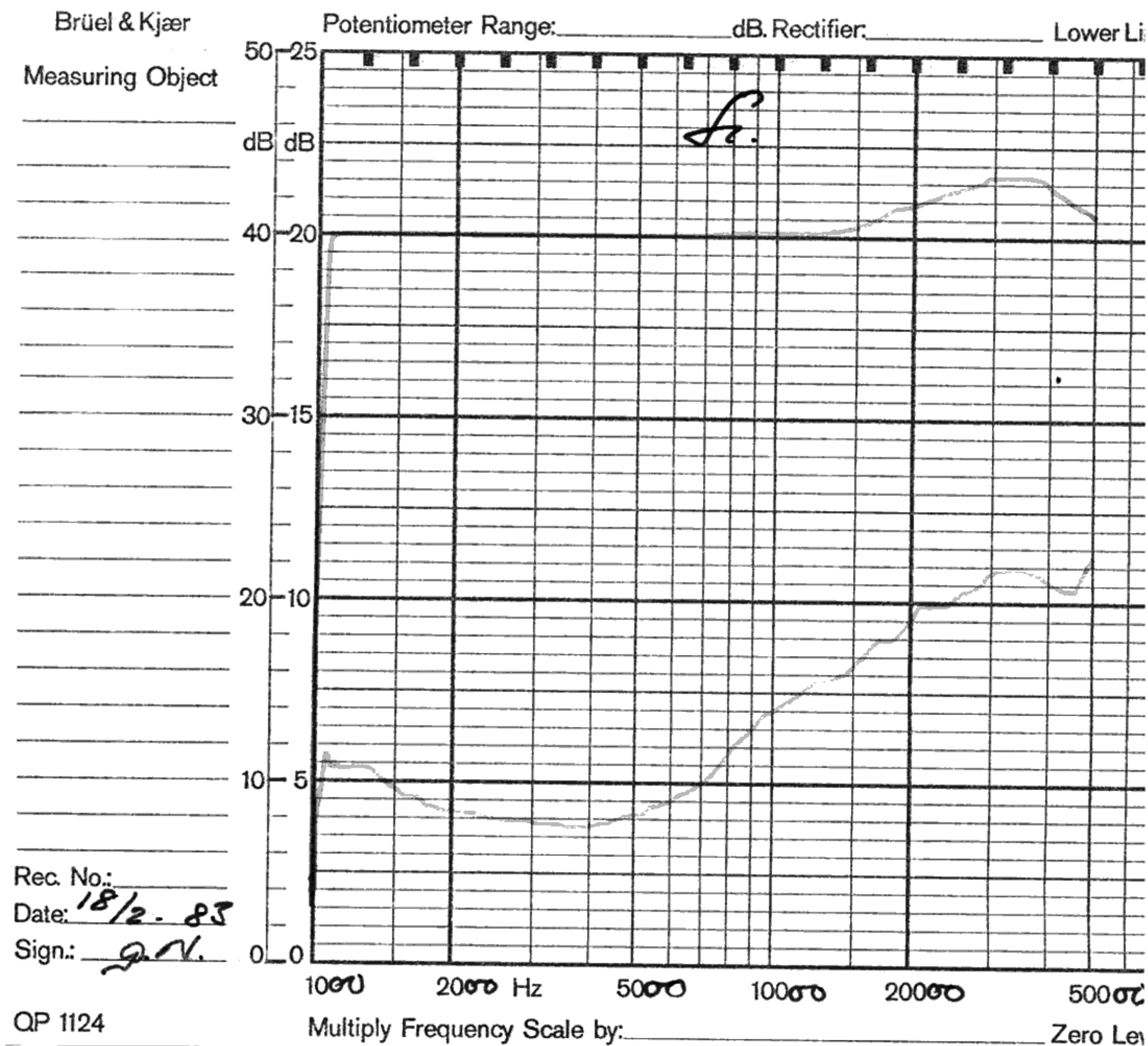
Return to: -

ORTOFON GOLDEN EAR CLUB,
Ortofon Manufacturing A/S, Mosedalvej 11B,
DK 2500 Copenhagen - Valby, DENMARK.

MC30 Cartridge Service Check.

In order to prevent damage to your valuable records, we recommend that your cartridge be inspected and tested after every 500 playing hours, or at least once a year, by your Ortofon dealer.

<p>Purchase date: _____</p> <p>Dealer's stamp and signature: _____</p>	
<p>1st check/date: _____</p> <p>Diamond inspected: _____</p> <p>Specifications checked: _____</p> <p>Serviced by: _____</p> <p>name signature</p>	<p>2nd check/date: _____</p> <p>Diamond inspected: _____</p> <p>Specifications checked: _____</p> <p>Serviced by: _____</p> <p>name signature</p>
<p>3rd check/date: _____</p> <p>Diamond inspected: _____</p> <p>Specifications checked: _____</p> <p>Serviced by: _____</p> <p>name signature</p>	<p>4th check/date: _____</p> <p>Diamond inspected: _____</p> <p>Specifications checked: _____</p> <p>Serviced by: _____</p> <p>name signature</p>
<p>5th check/date: _____</p> <p>Diamond inspected: _____</p> <p>Specifications checked: _____</p> <p>Serviced by: _____</p> <p>name signature</p>	<p>6th check/date: _____</p> <p>Diamond inspected: _____</p> <p>Specifications checked: _____</p> <p>Serviced by: _____</p> <p>name signature</p>



The frequency response and channel separation curves have been measured with the use of Brüel & Kjær Level Recorder type 2307 and Response Test Unit type 4416, with Test Record JVC TRS-1005. Measuring conditions were :-

Potentiometer Range:	50 dB
Rectifier:	RMS
Lower Lim. Freq.:	200 Hz
Writing Speed:	50 mm/sec.
Paper Speed:	1 mm/sec.

ortofon
accuracy in sound

Ortofon Manufacturing A/S,
Mosedalvej 11B, DK-2500 Copenhagen - Valby,
DENMARK.