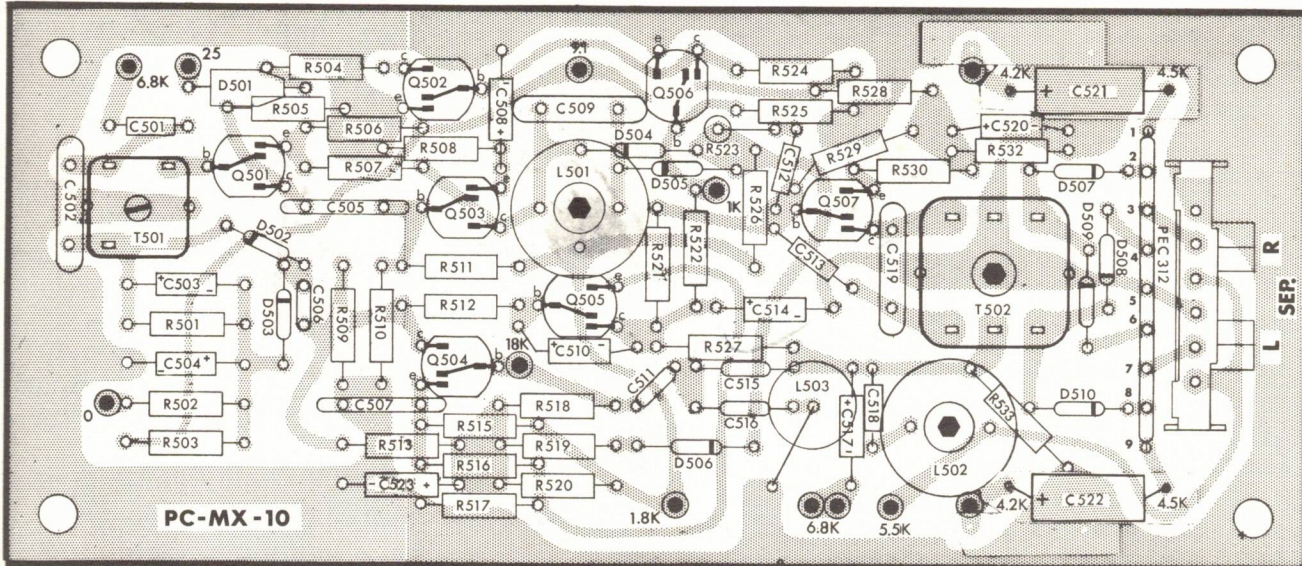


Q501, Q505, Q507 - QA-1
 Q502 - Q-2N2926
 Q503 - SE 1001
 Q504 - 2N2613

Q506 - Q-2N2926 or Q-2N3708 (QA-13)



MULTIPLEX

Z-PC-MX-10 Parts List

N-PC109-3L

C501	CPT-220	Q504	Q2N2613
C502, C509	CM20-4700	R501, R526	RC21-47K
C503, C510, C523	CTT-1/25	R502	RC21-22K
C504, C508, C514, C520	CTT-4.7/20	R503	RC21-1.8K
C505	CC-.0012-10%	R504	RC21-39 (This value may have to be padded, see page 57.)
C506	CC-.001	R505, R517, R524	RC21-4.7K
C507	CC-.02	R506	RC21-180
C511, C515	CC-120-10%	R507	RC21-470K
C512, C513	CPT-330	R508	RC21-470
C516	CC-1800-10%	R509, R510, R518, R519, R522, R523	RC21-10K
C517	CTT-10/20	R511	RC21-150K
C518	CPT-390	R512, R533	RC21-18K
C519	CM20-1500	R513	RC21-82K
C521, C522	CETM-2/25	R514-R535	RCV-2x10K-PC
D501	SR-1-5	R515	RC21-330
D502, D503, D504, D505, D507, D508, D509, D510	D-GM-3	R516, R530	RC21-2.2K
D506	DSI-1	R520	RC21-12K
L501	LV-.015T-PC	R521	RC21-100K
L502	LV-.015-PC	R525	RC21-1K
L503	LRFC-.01	R527	RC21-33K
PEC312	PEC-312	R528	RC21-820
Q501, Q505, Q507	QA-1 (2N1305)	R529	RC21-15K
Q502, Q506	Q2N2926, Q2N3705 (See note on R504)	R532	RC21-3.9K
Q503	Q-RF-2 (Fairchild SE1001)	T501	TRV-.015T-PC
		T502	TRV-.038TT-PC