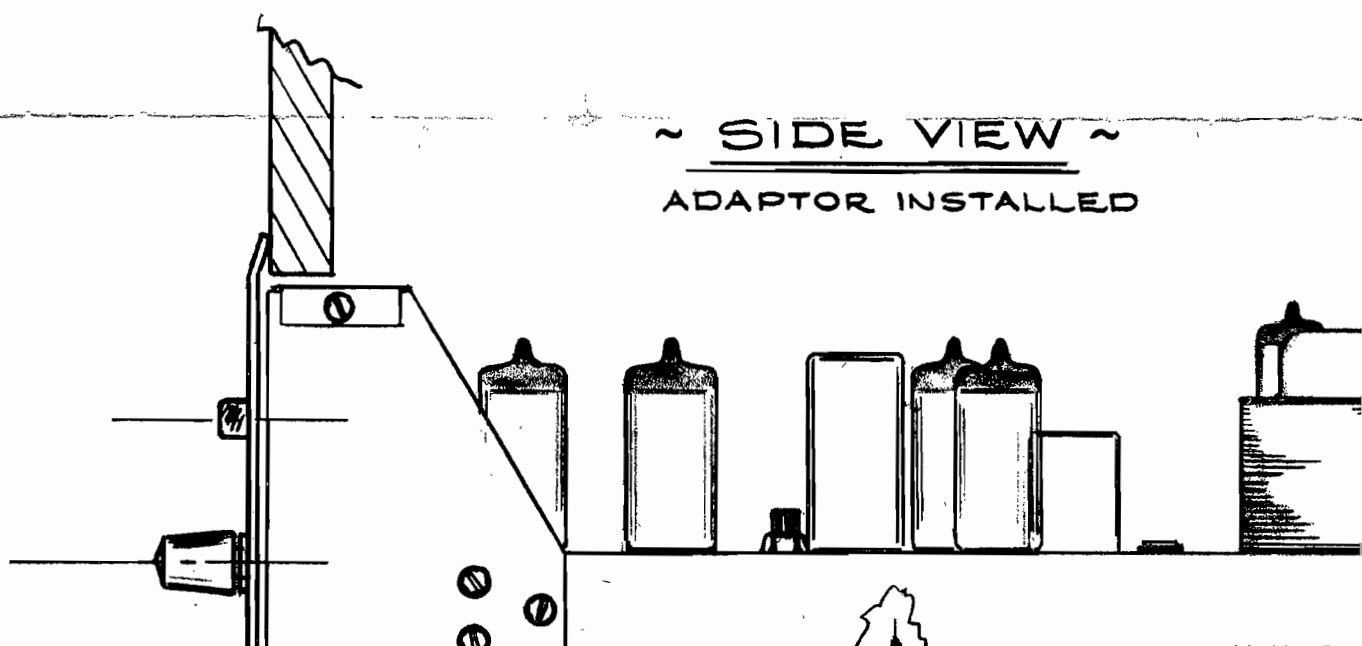
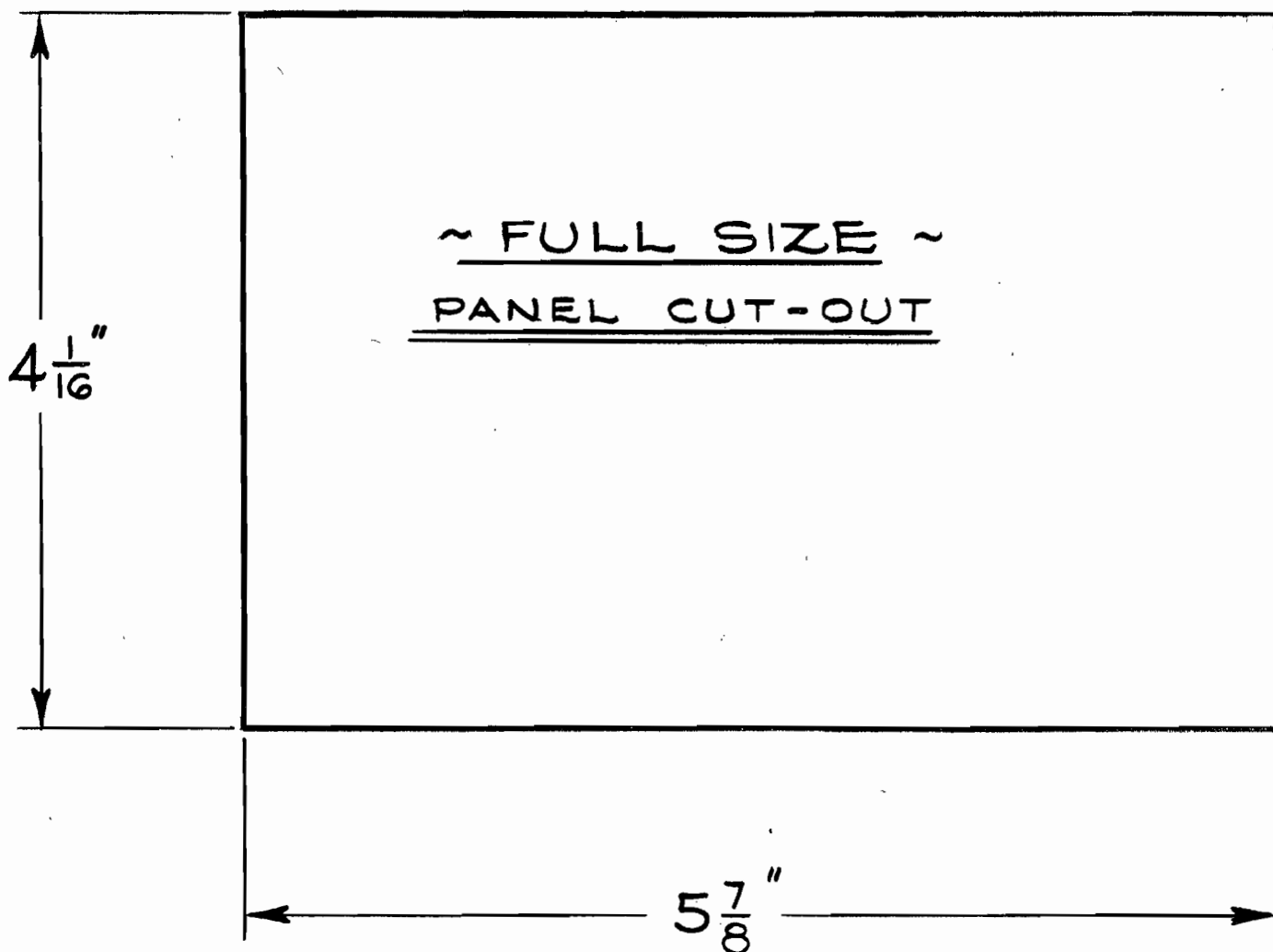


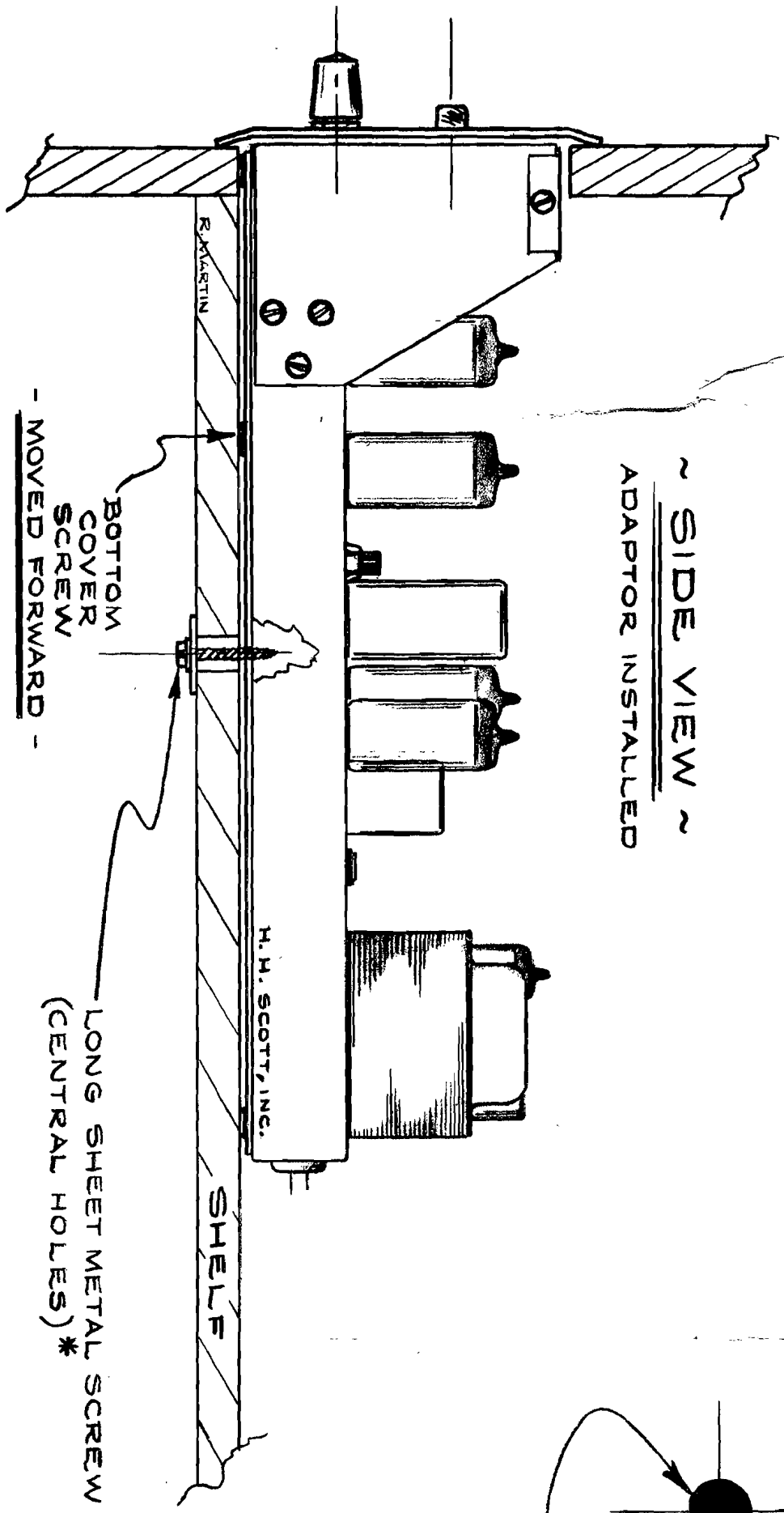
### Directions for Panel Mounting the 335

1. Locate the supporting shelf at the height you wish the adaptor positioned.
2. Using the full scale "Cutout Template" make a  $4 \frac{1}{16}$ " x  $5 \frac{7}{8}$ " cutout in the cabinet panel. The bottom of the cutout should be flush with the top of the supporting shelf as shown in the "side view".
3. The adaptor is held in place by the two long sheet metal screws provided. Remove the two bottom screws located midway on either side of the adaptor (see "side view"); reinstall the two screws just removed, in the two holes just forward of the central holes.\* The two long sheet metal screws will then be inserted in the central holes as shown in the "side view".
4. Two holes must be made in the adaptor shelf to correspond with the central holes\* in the adaptor. The holes should be  $\frac{3}{8}$ " in diameter. Use the "top view" template to locate the holes on the supporting shelf.
5. The large metal washers supplied should be slipped over the two long sheet metal screws and the screws should then be inserted up through the shelf into the central holes\* on both sides of the adaptor.
6. Start the screws into the bottom of the adaptor chassis but do not tighten down until the adaptor has been properly positioned. When positioned, tighten the screws until the adaptor is firmly mounted. DO NOT TIGHTEN EXCESSIVELY.



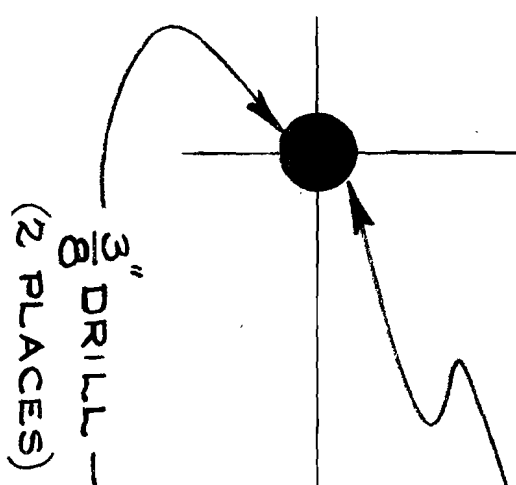
5 7/8"

~ SIDE VIEW ~  
ADAPTOR INSTALLED



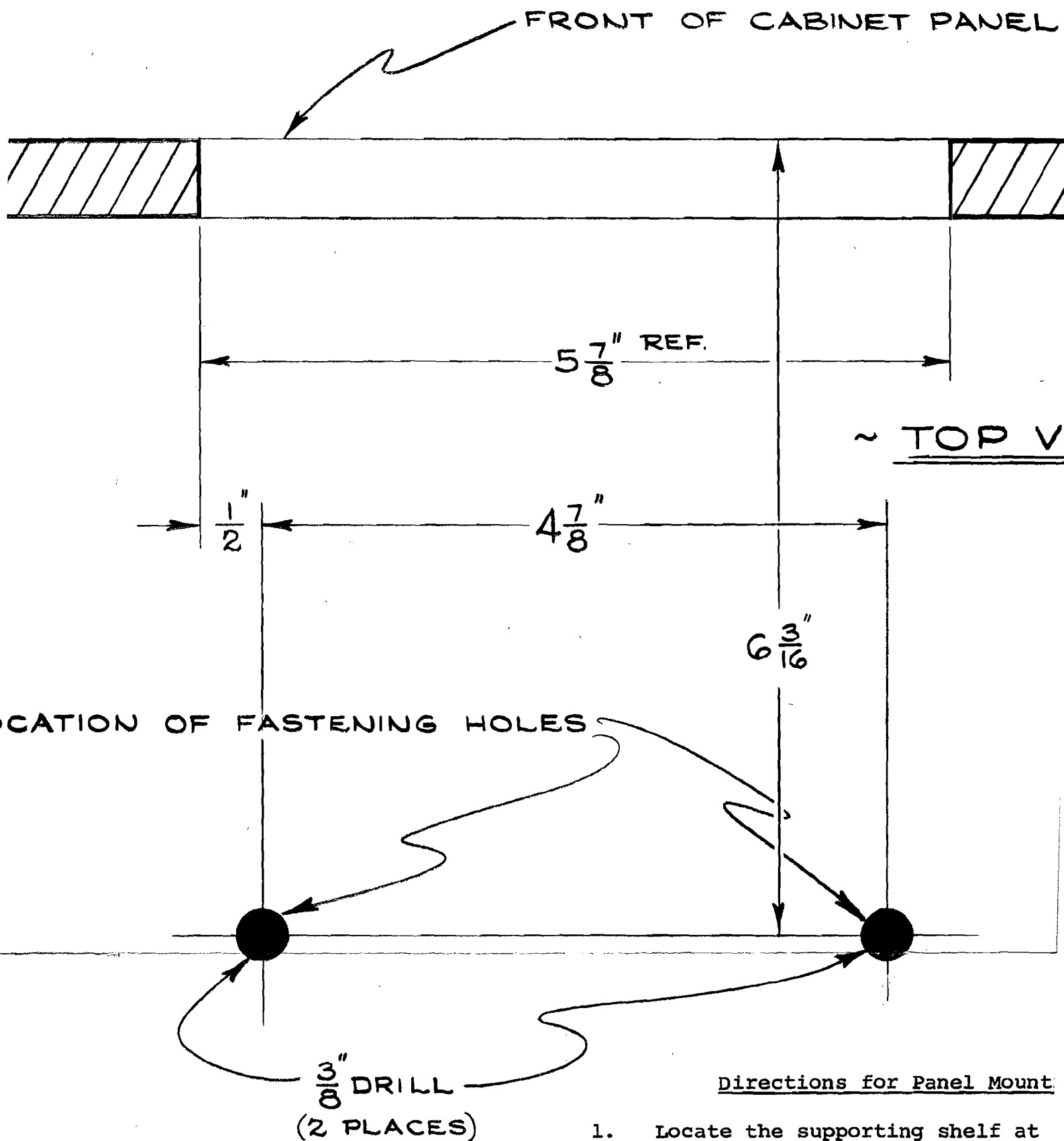
LOCATION OF FASTENING H

1/2"



LONG SHEET METAL SCREW (CENTRAL HOLES)\*

3/8" DRILL -  
(2 PLACES)



1. Locate the supporting shelf at the adaptor positioned.
2. Using the full scale "Cutout Template" x  $5\frac{7}{8}$ " cutout in the cabinet the cutout should be flush with supporting shelf as shown in the "