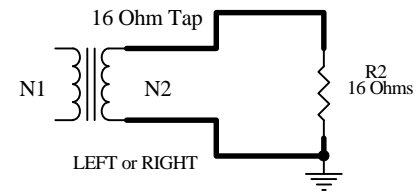


Parallel Case

Adjust VR1 to null the difference between both outputs before connecting the outputs in parallel. (Right output voltage = Left output voltage).



Single Case

Title			ST20 Parallel O/P		
Size	Number				
A4					
Date:	11-Feb-2006		Sheet of		
File:	C:\ST OUT.ddb		Drawn By:		