



TECHNICAL INSTRUCTIONS

B4
367

F.M. TUNERS FMT2 AND FMT2.MPX.

INSTALLATION

1. GENERAL

Two tuners are manufactured as follows:—

- FMT2. Standard tuner for monophonic reception.
FMT2.MPX. Standard tuner fitted with a multiplex decoder for monophonic and stereophonic reception.

2. REAR TERMINATIONS AND CONTROLS Fig. 2.

2:1 Mains Connections

The tuner is suitable for use on A.C. supplies of 100–150 V. and 200–250 V., 50–60 Hz. A flexible cable is provided for the supply connection. Tuners are despatched set for 240 V. mains input. If the supply voltage is different from this, adjustment is necessary, as below.

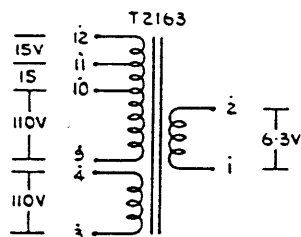
2:2 Mains Voltage Adjustment

Voltage selection within the range is effected by the voltage selector switch marked 'pull to change'. The voltage required should be set opposite the arrow on the rear panel.

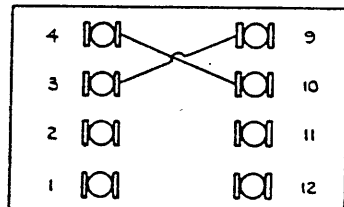
To change the range it is necessary to adjust the mains primary connections as shown in the diagram (Fig. 1)

2:3 Mains Fuse

The mains fuse recommended for all inputs is 0.5 Amp.

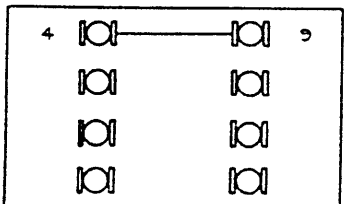


FOR 105V - 145V



JOIN 4-10
AND 3-9

FOR 210V - 250V



JOIN 4-9
ONLY

2:4 Aerial (Antenna) Input

The receiver aerial transformer is designed for use with balanced 300 Ohm feeder or unbalanced 75 Ohm co-axial cable. With 300 Ohm balanced input use the 2-pin plug, and for 75 Ohm input the standard co-axial connector. The plugs are supplied with the equipment.

2:5 Audio Output Sockets

An audio output of 2 V. approximately is available on channel 'L' and channel 'R' output sockets for a 100% modulated signal. As the average modulation is generally of the order of 30% the input sensitivity of the pre-amplifier should be approximately 100–150 mV.

2:6 Audio Output Volume Adjustment

A 2 gang potentiometer is fitted to the rear panel marked 'Output Volume' which should be adjusted to suit the pre-amplifier in use. It is suggested that the control be adjusted to provide the same output level to the loudspeakers as obtained on disc reproduction with the main volume control in the same position.

2:7 Interstation Quieting Adjustment

A further pre-set control is marked 'Quieting Threshold'. To adjust, turn fully clockwise. When listening to a station correctly tuned in, turn the 'Quieting Threshold' slowly anti-clockwise until the output level of the programme falls abruptly. The control should then be turned slowly clockwise to just restore the original listening level. This condition is an optimum adjustment to mute the receiver between stations without affecting the sensitivity.

2:8 Stereo Threshold

(See sect. 4.)

3. PANEL CONTROLS

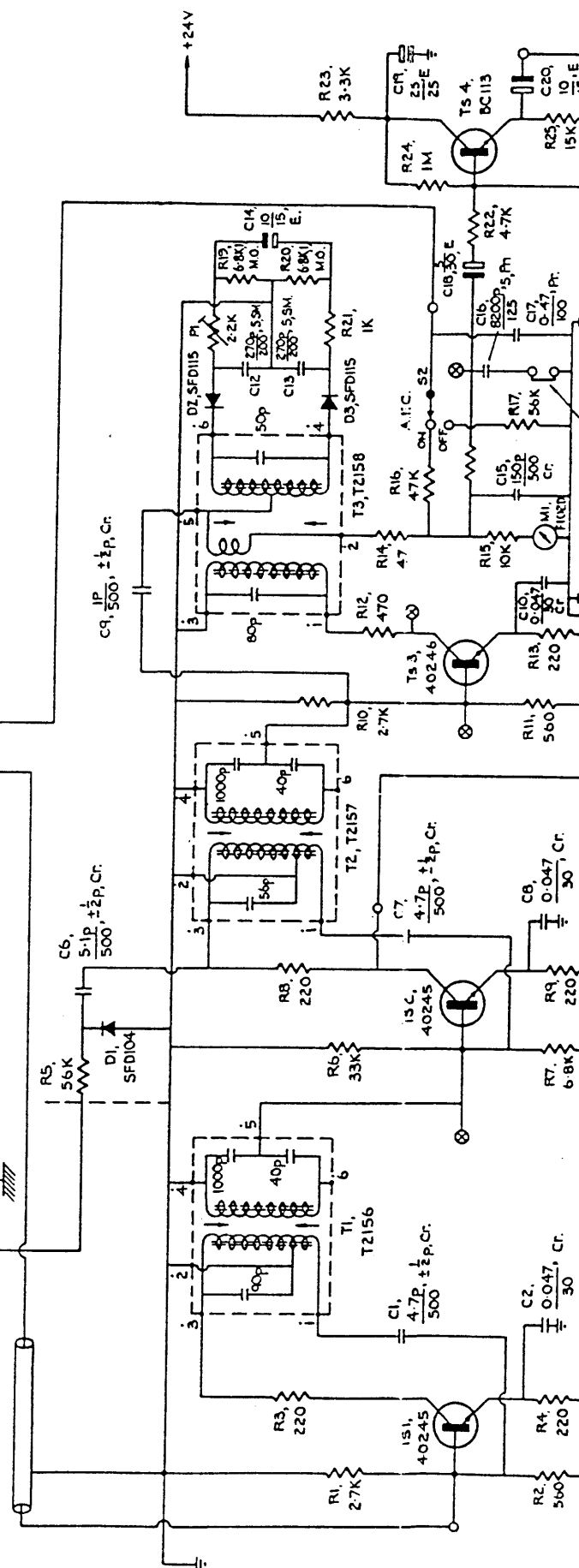
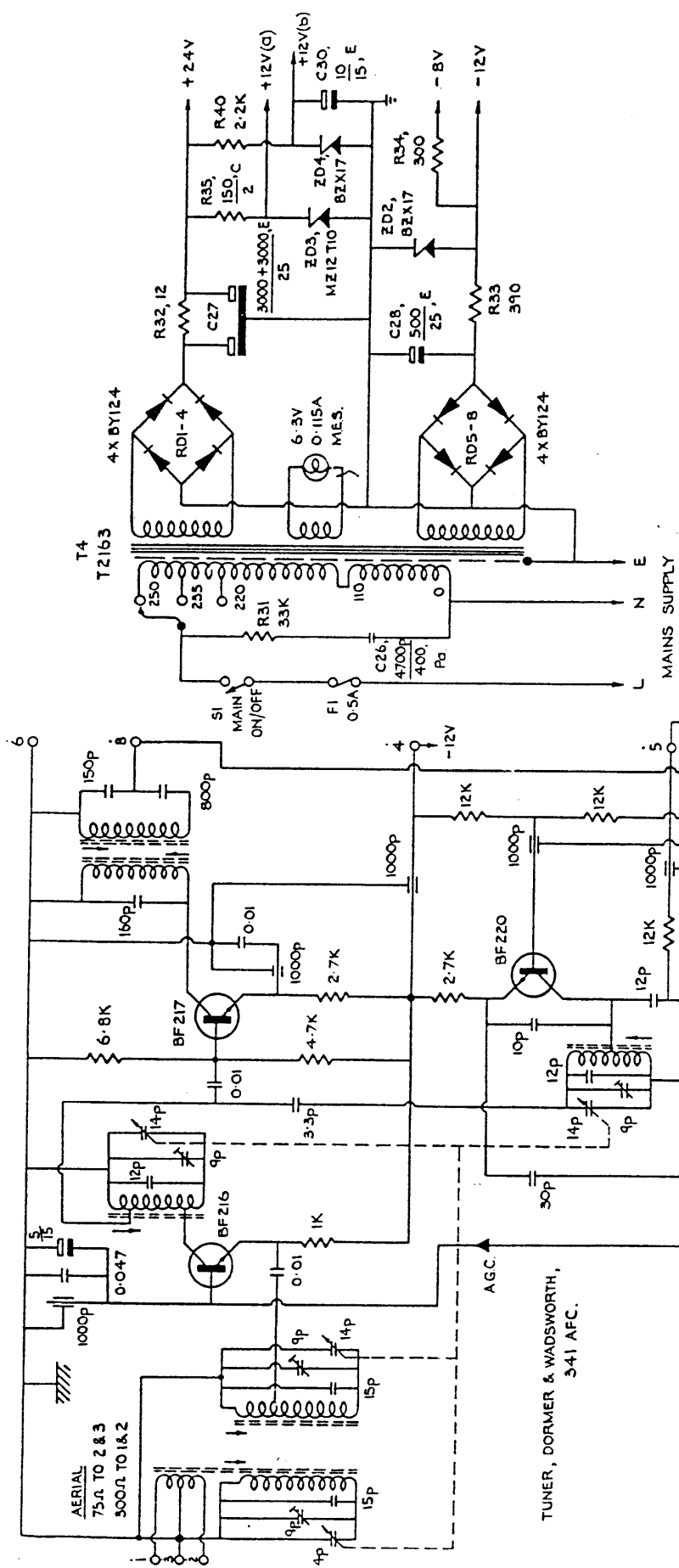
3:1 Tuning

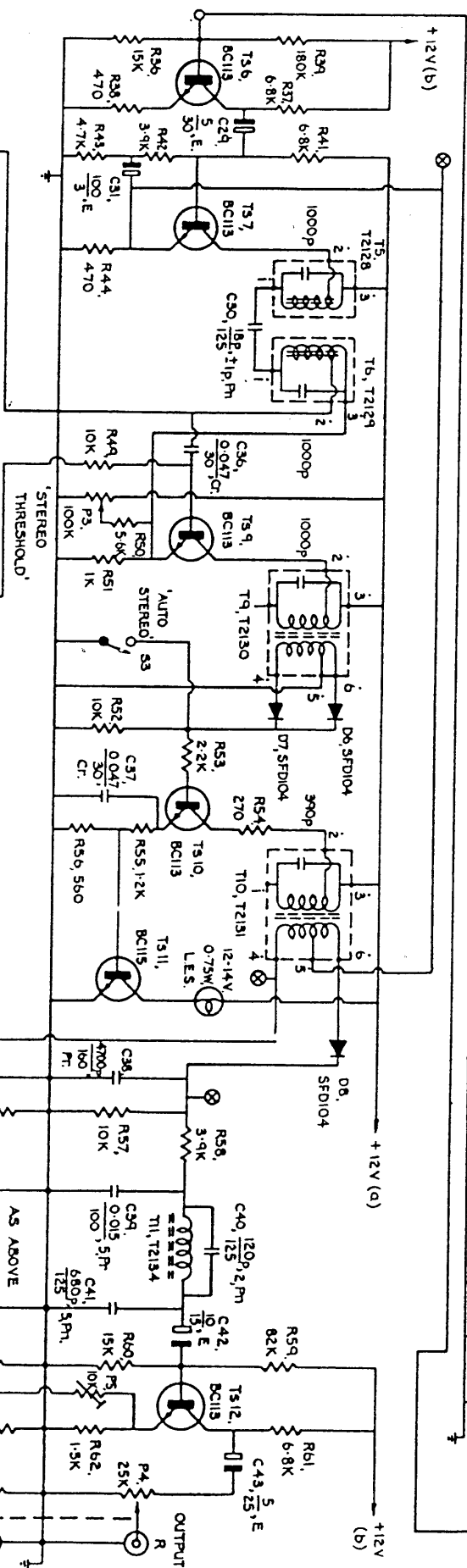
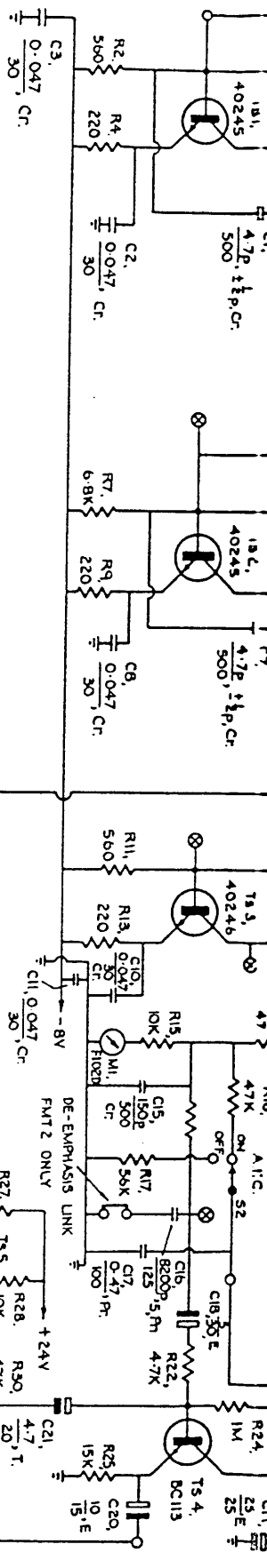
The tuner covers a band of frequencies from 87.5 to 108.5 MHz. A centre zero meter is provided to show when the receiver is correctly tuned. It will be noted that when a transmission is received, the pointer of the tuning indicator will move to the left on one side of the station, and to the right on the other side. The correct tuning position is in the square between the green rectangles.

The receiver is fitted with 'A.F.C.' (automatic frequency control) which attempts to pull the station being received into correct tune when mistuned within a small band of frequencies (± 200 kHz.). 'A.F.C.' is applied to the receiver by depressing the button on the front panel so marked. The tuner should be adjusted as accurately as possible without 'A.F.C.' When 'A.F.C.' is applied the tuner will adjust itself to the correct tuning position for lowest distortion and maximum separation between stereophonic channels.

3:2 Mains On/Off

The mains On/Off switch is fitted to the front panel to enable the tuner to be independently switched off when not in use.





STEREO DECODER
(FITTED TO FM/2 MPX ONLY)

